

# Multimatic® 220 AC/DC

**MIG, Stick and AC/DC TIG Package** 

## Quick Specs

### Light Industrial Applications

Light fabrication  
Maintenance and repair  
Auto body  
Farm/home

### Processes

MIG (GMAW)  
Flux-cored (FCAW)  
DC stick (SMAW)  
AC/DC TIG (GTAW)  
Pulsed TIG (GTAW-P)

**Input Power** 120/240 V, 1-phase, 50/60 Hz

**Amperage Range** MIG: 30–230 A

DC stick: 30–200 A

AC/DC TIG: 20–210 A

**Net Weight** 56 lb. (25.4 kg)

## The Multimatic 220 AC/DC. It does... so you can too.

Ideal for hobbyists and small shops, the Multimatic 220 AC/DC gives you the freedom to weld any process — MIG, flux-cored, stick, and AC/DC TIG — with one portable, powerful, easy-to-use machine. Setup and switching processes are fast and easy, all while ensuring excellent arc quality using either 120- or 240-volt power.



## All in One



Multiple processes with only one machine

## Easy to Use



Auto polarity, process and settings



Quick and easy setup

## Portable



Light enough to easily move around your garage or shop



Welder is warranted for three years, parts and labor.  
Gun warranted for 90 days, parts and labor.



**Miller Electric Mfg. LLC**  
An ITW Welding Company  
1635 West Spencer Street  
P.O. Box 1079  
Appleton, WI 54912-1079 USA

**Equipment Sales US and Canada**  
Phone: 866-931-9730  
FAX: 800-637-2315  
International Phone: 920-735-4554  
International FAX: 920-735-4125

**MillerWelds.com**  




# Multimatic® 220 AC/DC Features and Benefits

## All in One



Take on more projects with one machine that has MIG, DC stick, and AC/DC TIG.

**MIG:** 24 ga.–3/8 in. steel  
18 ga.–3/8 in. aluminum

**DC Stick:** 16 ga.–3/8 in. steel

**AC/DC TIG:** 24 ga.–1/4 in. steel and aluminum

The Multimatic 220 AC/DC comes equipped with all accessories to weld any process, unlike other machines where you need to purchase additional accessories.

## Easy to Use



With our innovative QuickTech™ technology, setup and changing processes is even easier.

- Automatically determines the polarity. Work is always connected to the bottom right receptacle. MIG gun and TIG torch can stay connected at the same time.

- Automatically switches to the right process. Just hit the trigger or the foot control and the machine automatically changes, eliminating the need to manually change processes.
- Automatically recalls the settings from the last process used.



Pro-Set™ (TIG and stick manual modes)

eliminates the guesswork when setting weld parameters. Simply adjust control until Pro-Set appears on the display and the number turns blue.

- AC Balance (AC TIG) — controls the cleaning action (Pro-Set 75%)
- AC Frequency (AC TIG) — controls the width of the arc cone (Pro-Set 120 Hz)
- Pulse (DC TIG) — helps focus the arc for increased stability, penetration and travel speed (Pro-Set 100 Hz)
- DIG (Stick) — lets you tailor arc characteristics for a wide range of applications (Pro-Set 30% 7018 electrodes)



**Auto-Set™ Elite** fast and easy predefined settings for multiple materials and processes to help you get welding quickly.

- Available for all processes (MIG, stick, AC TIG, DC TIG) with the ability to fine-tune your settings.
- Set weld parameters by selecting:
  - MIG (shown) — wire diameter and material thickness
  - Stick — electrode type, diameter and material thickness
  - AC/DC TIG — tungsten diameter and material thickness



**Robust, angled wire drive with Quick**

**Select™ drive roll** for easily changing one wire type/diameter to another. Quick Select drive roll offers three grooves — two for different size solid wires and a third for flux-cored wire.



**Two shielding gas connections** so both

gases can be left connected to the machine, no switching needed. One connection for MIG gas and one for TIG gas.



**Easy-to-understand interface** with 3.5-inch color LCD display and intuitive connection setup images.

# Multimatic® 220 AC/DC Features and Benefits

## Portable



Weighing only 56 pounds, the Multimatic 220 AC/DC can go where the work is, plus the added convenience of one machine versus two or more.

### Optional dual cylinder rack cart

Dual cylinder rack cart offers portability while holding two gas cylinders.



## Versatile



Operates on 120-volt or 240-volt power letting you work virtually anywhere. Multi-voltage plug (MVP™) easily connects to common 120-volt or 240-volt power outlets — no tools required. Choose the plug that fits the receptacle and connect it to the power cord.



Optional wireless foot control shown.

**14-pin controlled operator alternatives.** The standard 14-pin connector on your Multimatic 220 AC/DC lets you choose your control for a customized experience, whether it's a foot control, fingertip control, or wireless foot control.



### Wide range of TIG adjustability.

- AC Balance – adjustable from 60–80%
- AC Frequency – adjustable from 60–150 Hz
- DC Pulse – adjustable from Off–150 pulses per second (PPS)
- TIG Post-Flow – adjustable from Auto–25 seconds (accessible through service menu screen 12)
- Lift-Arc™ and high-frequency starts
- Tungsten size selection

# Multimatic® 220 AC/DC Package

## Comes complete with:

- Power source
- 6.5 ft. (2 m) power cord with MVP plugs for 120 V and 240 V
- 10 ft. (3 m) M-100 MIG gun and cable assembly
- 13 ft. (4 m) cable electrode holder and 25 mm Dinse-style connector
- 12.5 ft. (3.8 m) Weldcraft™ A-150 (WP-17) TIG torch with 25 mm Dinse-style connector
- RFCS-14 HD foot control with 20 ft. (6 m) cord
- 10 ft. (3 m) work cable with clamp and 25 mm Dinse-style connector
- Two flow gauge regulators and gas hoses for argon and AR/CO<sub>2</sub> mix
- Hobart® spool of .030 in. (0.8 mm) solid wire
- Two contact tips for .030 in. (0.8 mm) wire
- Quick Select™ drive roll for .024 in. (0.6 mm) or .030/.035 in. (0.8/0.9 mm) solid wire, and .030/.035 in. (0.8/0.9 mm) flux-cored wire
- AK2C TIG torch accessory kit
- Material thickness gauge ▶ 229895
- Hook-and-loop cord wraps

Note: Shielding gas and safety equipment not included.



## Specifications (Subject to change without notice.)

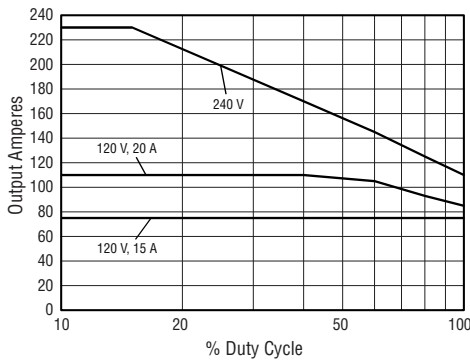


Welding Mode/ Process	Input Power	Welding Amperage Range	Rated Output	Amps Input at Rated Output, 50/60 Hz				Wire Feed Speed	Max. Open-Circuit Voltage	Dimensions	Net Weight
				120 V	240 V	KVA	KW				
CV: MIG/ flux-cored	120 V	30–125 A	105 A at 19.2 V, 60% duty cycle	23.3	—	2.8	2.8	60–600 ipm (1.5–15.2 m/min.)	45 VDC	H: 17.5 in. (445 mm) W: 11.25 in. (286 mm) D: 21.5 in. (546 mm)	56 lb. (25.3 kg)
	240 V	30–230 A	200 A at 24 V, 20% duty cycle	—	27.2	4.8	4.8				
			170 A at 21.5 V, 40% duty cycle	—	21.5	3.8	3.8				
CC: TIG	120 V	20–140 A	130 A at 15.2 V, 40% duty cycle	24.0	—	2.9	2.9	—	46 VDC		
	240 V	20–210 A	210 A at 18.4 V, 20% duty cycle	—	22.4	5.4	5.4				
CC: Stick	120 V	30–90 A	90 A at 23.6 V, 40% duty cycle	24.5	—	2.9	2.9				
	240 V	30–200 A	200 A at 28.4 V, 15% duty cycle	—	31.3	7.5	7.5				

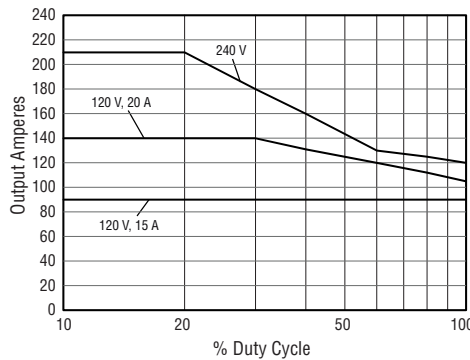
Certified by Canadian Standards Association to both the Canadian and U.S. Standards.

## Performance Data

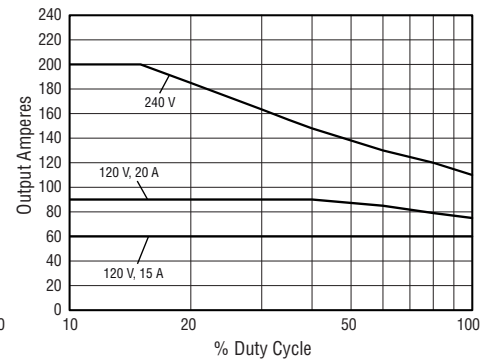
MIG Duty Cycle Chart



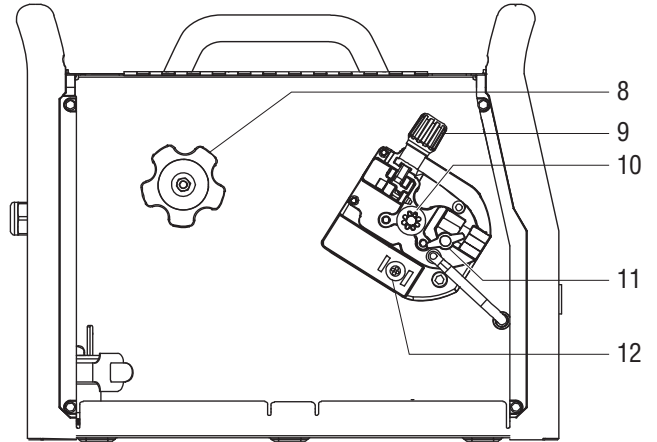
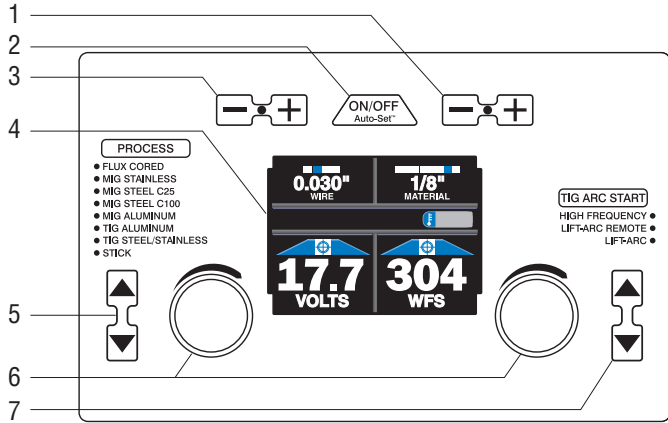
TIG Duty Cycle Chart



Stick Duty Cycle Chart



# Control Panel



1. Material Thickness Buttons
2. Auto-Set™ Button
3. Wire/Rod/Tungsten Buttons
4. LCD Display Panel
5. Process Buttons
6. Adjustment Knobs

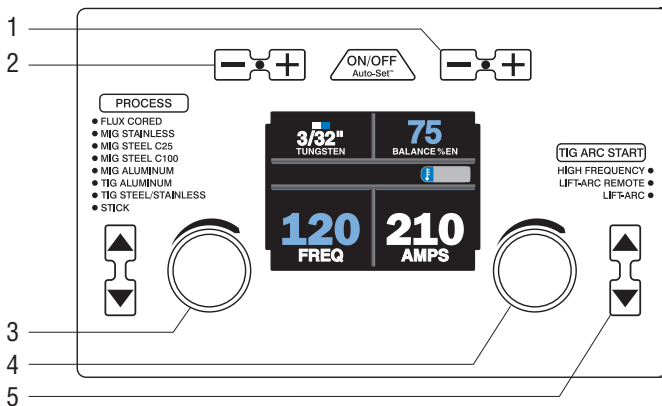
7. TIG Arc Start Buttons  
(Lift-Arc™ not available for TIG aluminum)
8. Plastic Hub with Retaining Ring  
for 8-inch Spools (shaft also accepts  
4-inch spools)

9. Calibrated Tension Knob
10. Drive Roll
11. Gun Securing Knob
12. Four-pin Trigger Control Cable  
Receptacle

*Note: Power switch and gas solenoid are on power source rear panel.*

## TIG Aluminum Manual Mode

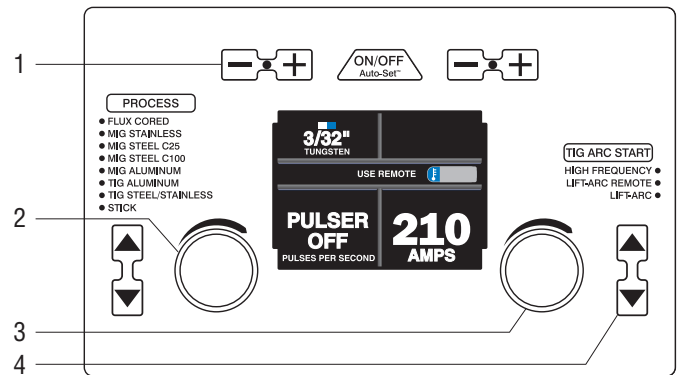
*Note: Button and knob functions change in TIG manual modes from the main panel above.*



1. Balance Adjustment Buttons (Pro-Set™ 75%)
2. Tungsten Size Buttons
3. Frequency Adjustment Knob (Pro-Set™ 120 Hz)
4. Amperage Adjustment Knob
5. TIG Arc Start Buttons  
(Lift-Arc™ not available for TIG aluminum)

## TIG Steel/Stainless Manual Mode

*Note: Button and knob functions change in TIG manual modes from the main panel above.*



1. Tungsten Size Buttons
2. Pulse Adjustment Knob (Pro-Set™ 100 PPS)
3. Amperage Adjustment Knob
4. TIG Arc Start Buttons

# Genuine Miller® Accessories

## Replacement/Optional MIG Gun

**M-100 (Standard)**  
248282 10 ft. (3 m)

**M-150 (Optional)**  
249040 12 ft. (3.7 m)  
249041 15 ft. (4.5 m)

All ship with liner 194011.



## Spoolmate™ 100 Spool Gun 300371

Direct-connect spool gun handles .030–.035 inch (0.8–0.9 mm) aluminum (4043 only) and .023–.035 inch (0.6–0.9 mm) steel/stainless steel wires. Rated at 135 amps, 30-percent duty cycle. Includes 12-foot (3.7 m) cable assembly and custom carrying case.



## Spoolmate™ 150 Spool Gun 301272

Direct-connect spool gun handles .030–.035 inch (0.8–0.9 mm) 4000/5000 series aluminum and .023–.035 inch (0.6–0.9 mm) steel/stainless steel wires. Rated at 150 amps, 60-percent duty cycle. Includes 20-foot (6.1 m) cable assembly.



## Weldcraft™ A-150 (WP-17) TIG Torch WP1712RDI25 (12.5 ft.)

150-amp air-cooled torch with 25 mm flow-through Dinse-style connector.



## AK2C Accessory Kit

Includes one short back cap, one of each size (4, 5, 6) alumina nozzle, and one of each size (.040, 1/16, 3/32 inch) of the following: collet, collet body, and 7-inch 2% ceriated tungsten electrode. *Order from Miller Service Parts.*



## TIG Torch Accessory Kit AK-150MFC

Allows welding operators to customize their standard Weldcraft™ A-150 (WP-17) TIG torch for their specific application. Kit converts into 28 different torch styles while using the existing cable. Features nozzles, collets, collet bodies, torch heads, handle and more. *Order from Miller Service Parts.*



## Protective Cover 301524



## Dual Cylinder Rack Cart 951770

Package consists of both running gear/cylinder rack 301239 and dual cylinder rack conversion kit 301454. Cart features durable construction with rubber rear wheels, convenient front handles, cable holders, plastic consumable box, and dual cylinder rack with tool holder. Holds two cylinders, each gas cylinder should be no greater than 7 inches (178 mm) in diameter or 65 pounds (29.5 kg) in weight. For use with Millermatic® 141 and 211, Multimatic® 200, 215 and 220 AC/DC, and Diversion™.

## MVP™ Plugs

*Order from Miller Service Parts.*



**219258**  
For power cable 6-50P (240 V/50 A). Included with machine.



**219261**  
For power cable 5-15P (120 V/15 A). Included with machine.



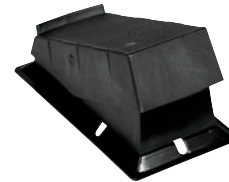
**219259**  
For power cable 5-20P (120 V/20 A). Optional, not included with machine.

## Remote Controls



## Wireless Remote Foot Control 300429

For remote current and contactor control. Receiver plugs directly into the 14-pin receptacle of Miller machine. 90-foot (27.4 m) operating range.



## RFCS-14 HD Foot Control 194744

Maximum flexibility is accomplished with a reconfigurable cord that can exit the front, back or either side of the pedal. Foot pedal provides remote current and contactor control. Includes 20-foot (6 m) cord and 14-pin plug.



## RCC-14 Remote Contactor and Current Control 151086

East/west rotary-motion fingertip control attaches to TIG torch using two hook-and-loop fasteners. Includes 26.5-foot (8 m) control cord and 14-pin plug.



## RCCS-14 Remote Contactor and Current Control 043688

North/south rotary-motion fingertip control attaches to TIG torch using two hook-and-loop fasteners. Includes 26.5-foot (8 m) control cord and 14-pin plug.

## Consumables (Order from Miller Service Parts.)

### For M-100/M-150 Gun



#### Contact Tips

- 087299** .024 in. (0.6 mm)
- 000067** .030 in. (0.8 mm)
- 000068** .035 in. (0.9 mm)
- 000069** .045 in. (1.2 mm)



**Contact Tip Adapter 169716**



#### Replacement Liners

- 194010** .024 in.
  - 194011** .030–.035 in. (standard)
  - 194012** .035–.045 in.
- 15-foot length — trim to size needed.



**Nozzle 169715**

1/2-inch (13 mm) diameter orifice. Nozzle flush with contact tip (standard).



**Gasless Flux-Cored Nozzle 226190**

*For M-100 gun only.*

For use with self-shielding flux-cored wires. Improves visibility, eases access in tight corners, protects tip adapter/gas diffuser from spatter and from shorting to the workpiece.



#### Drive Rolls

**Quick Select™ 261157**

For .024-inch (0.6 mm) or .030/.035-inch (0.8/0.9 mm) solid wire, and .030/.035-inch (0.8/0.9 mm) flux-cored wire.

**Dual Groove, V-Knurled 202926**

For .030/.035-inch (0.8/0.9 mm) or .045-inch (1.2 mm) flux-cored wire.



#### M-Series Gun Consumable Kits

**234607** .024 in. (0.6 mm)

**234608** .030 in. (0.8 mm)

**234609** .035 in. (0.9 mm)

Each kit contains ten contact tips, one nozzle, and one contact tip adapter.

### For Spoolmate™ 100 Spool Gun



#### Contact Tips (5 per package)

**199730** .024 in. (0.6 mm)

**186419** .030 in. (0.8 mm)

**186406** .035 in. (0.9 mm)



**Nozzle 186405**

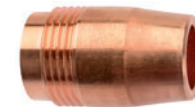
### For Spoolmate™ 150 Spool Gun



#### Contact Tips (5 per package)

**199387** .030 in. (0.8 mm)

**199388** .035 in. (0.9 mm)



**Nozzle 050622**

### For Both Spool Guns



**Drive Roll (1) 186413**

For .030/.035-inch (0.8/0.9 mm) wire.



**Push Roll (1) 186414**

For .030/.035-inch (0.8/0.9 mm) wire.

## Ordering Information

Power Source and Options	Stock No.	Description	Qty.	Price
<b>Multimatic® 220 AC/DC</b>	<b>907757</b>	120/240 V, 50/60 Hz		
<b>Guns</b>				
M-100 Gun (Standard)	<b>248282</b>	10 ft. (3 m), .030–.035 in. (0.8–0.9 mm)		
M-150 Gun (Optional)	<b>249040</b>	12 ft. (3.7 m), .030–.035 in. (0.8–0.9 mm)		
	<b>249041</b>	15 ft. (4.5 m), .030–.035 in. (0.8–0.9 mm)		
Spoolmate™ 100 Spool Gun	<b>300371</b>	12 ft. (3.7 m). Includes custom carrying case		
Spoolmate™ 150 Spool Gun	<b>301272</b>	20 ft. (6.1 m)		
<b>Accessories</b>				
Weldcraft™ A-150 (WP-17) TIG Torch	<b>WP1712RDI25</b>	12.5 ft. (3.8 m) cable		
Protective Cover	<b>301524</b>			
Dual Cylinder Rack Cart	<b>951770</b>	Includes running gear/cylinder rack 301239 and dual cylinder rack conversion kit 301454. Must be assembled together		
Material Thickness Gauge	<b>229895</b>			
<b>Remote Controls</b>				
Wireless Remote Foot Control	<b>300429</b>	Foot control with wireless 90 ft. (27.4 m) operating range		
RFCS-14 HD	<b>194744</b>	Heavy-duty foot control (included with TIG kit and TIG package)		
RCC-14	<b>151086</b>	Fingertip control		
RCCS-14	<b>043688</b>	Fingertip control		
<b>Available through Miller Service Parts</b>				
TIG Torch Accessory Kits	<b>AK2C</b>	For use with Weldcraft™ A-150 (WP-17) Torch		
	<b>AK-150MFC</b>	For use with Weldcraft™ A-150 (WP-17) Torch		
MVP™ Plugs		See page 6		
Flow Gauge Regulator for Argon or AR/CO <sub>2</sub> Mix	<b>268546</b>	Replacement standard regulator		
Flow Gauge Regulator for CO <sub>2</sub>	<b>212492</b>	Required if using 100-percent CO <sub>2</sub> gas		
Replacement Screen Cover	<b>271493</b>	Replacement cover for LCD display panel		
Contact Tips		See page 7		
Contact Tip Adapter	<b>169716</b>	For M-100 and M-150 guns		
Replacement Liners		See page 7		
Nozzles		See page 7		
Gasless Flux-Cored Nozzle	<b>226190</b>	For M-100 gun		
Drive Rolls		See page 7		
M-Series Gun Consumable Kits		See page 7		

Date:

Total Quoted Price:

Distributed by:

